



# Bracknell Town Council

---

## **About Bracknell Town Council:**

Our mission is to be the guardian of Bracknell Town's parks, play areas and public spaces, and to safeguard them from possible future development. To be responsive to the needs of all sections of our community, to build upon our achievement and provide high quality services at minimum cost.

Bracknell Town Council is the largest Parish council within the Unitary Authority of Bracknell Forest. It provides services to over half the population of the Borough located within 12 wards making up the central area of the Borough.

To the south lie the parishes of Sandhurst and Crowthorne, to the east is Winkfield parish and to the north are the parishes of Binfield and Warfield.

Information about the Town Council and its activities, Councillors, meetings and services may be found on our website. The website is regularly updated to give pricing information for room hire, tennis, mini-golf etc. as well as Pavilion opening times and football pitch closure information etc.

Special events, news and openings are also advertised on the website, and you can follow us on Twitter and Facebook.

Additionally, the Town Council produces a Town Guide and two magazines per year 'Bracknell Matters', copies of which may be picked up at any of the Council's coffee shops or at Brooke House. The publications may also be available at libraries, doctors' surgeries and local information points etc. A pdf version of the publications may be downloaded from our website too.

The foyer of Brooke House in the High Street is a valuable source of information and provides an opportunity for local organisations to display posters and leaflets about their activities. If you would like to display information about your organisation or event please contact us or bring the information in to Brooke House. The Town Council reserves the right to agree which information and/or brochures may be displayed, the Town Clerk's decision on this matter is final.

Bracknell Town Council provide more than 30 recreational areas across the town, where people of all ages can find opportunities for play, sports, walking, fishing and other leisure activities. More information about our parks, play areas and recreation areas can be found under 'facilities section of our website.

For those with green fingers, the Council maintains 235 allotments spread across 8 sites, although there is a waiting list for those wishing to take up an allotment.

We are also responsible for Larges Lane Cemetery which is maintained as a 'living cemetery', with attention given to encouraging biodiversity. The cemetery has won several awards under the "Living Churchyards and Cemeteries Scheme".

Brooke House, 54 High Street, Bracknell, Berkshire, RG12 1LL

01344 420079

[enquiries@bracknelltowncouncil.gov.uk](mailto:enquiries@bracknelltowncouncil.gov.uk)

[www.bracknelltowncouncil.gov.uk](http://www.bracknelltowncouncil.gov.uk)

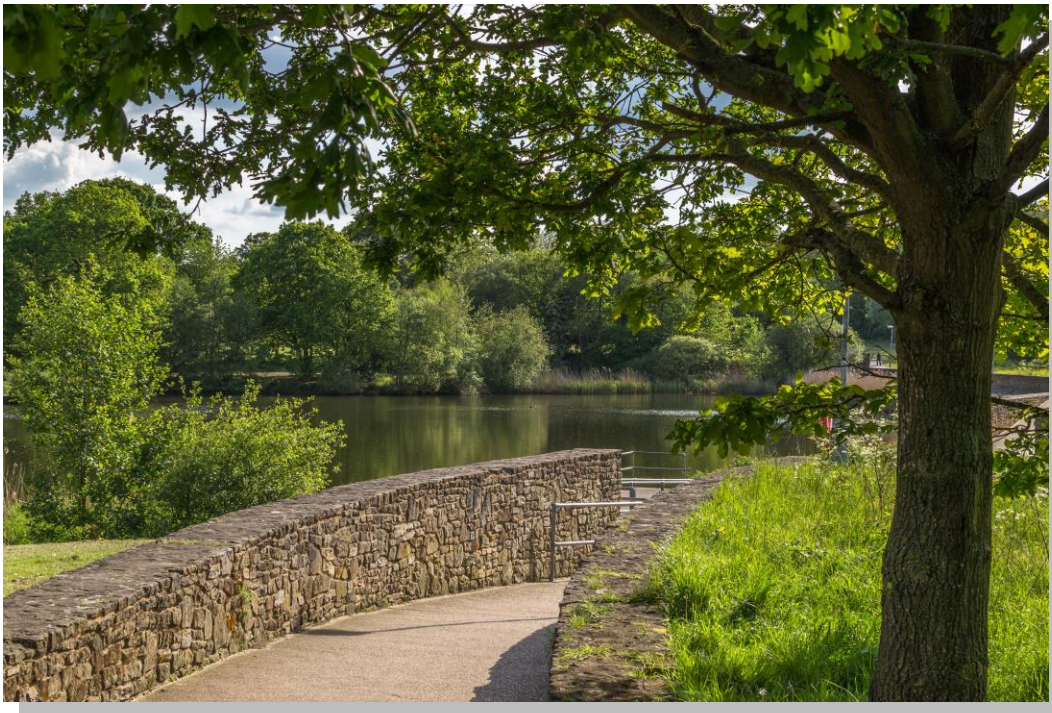
There are also areas of woodland managed by the Town Council or jointly with Bracknell Forest Council.

Bracknell Town Council complies with the Freedom of Information Act and has adopted the Model Publication Scheme.

In addition to our sports and recreation facilities, we also manage the community hall at Braybrooke Recreation Ground and the Copse Suite at Jocks Lane which are available for one-off hires such as weddings, anniversaries, children's and family birthdays, and other special occasions. The Council Chamber at Brooke House is also available for hire from Monday to Friday.

We hire out many of our football pitches to local teams and also have cricket pitches, bowls greens and tennis courts available for hire. The Synthetic Pitch at Birch Hill Recreation Ground is available all year round for Hockey and Football. Full floodlighting is available at an extra cost.

More comprehensive information about our services and facilities can be found at [www.bracknelltowncouncil.gov.uk](http://www.bracknelltowncouncil.gov.uk)



*Mill Pond – Photo Credit: Bracknell Resident*