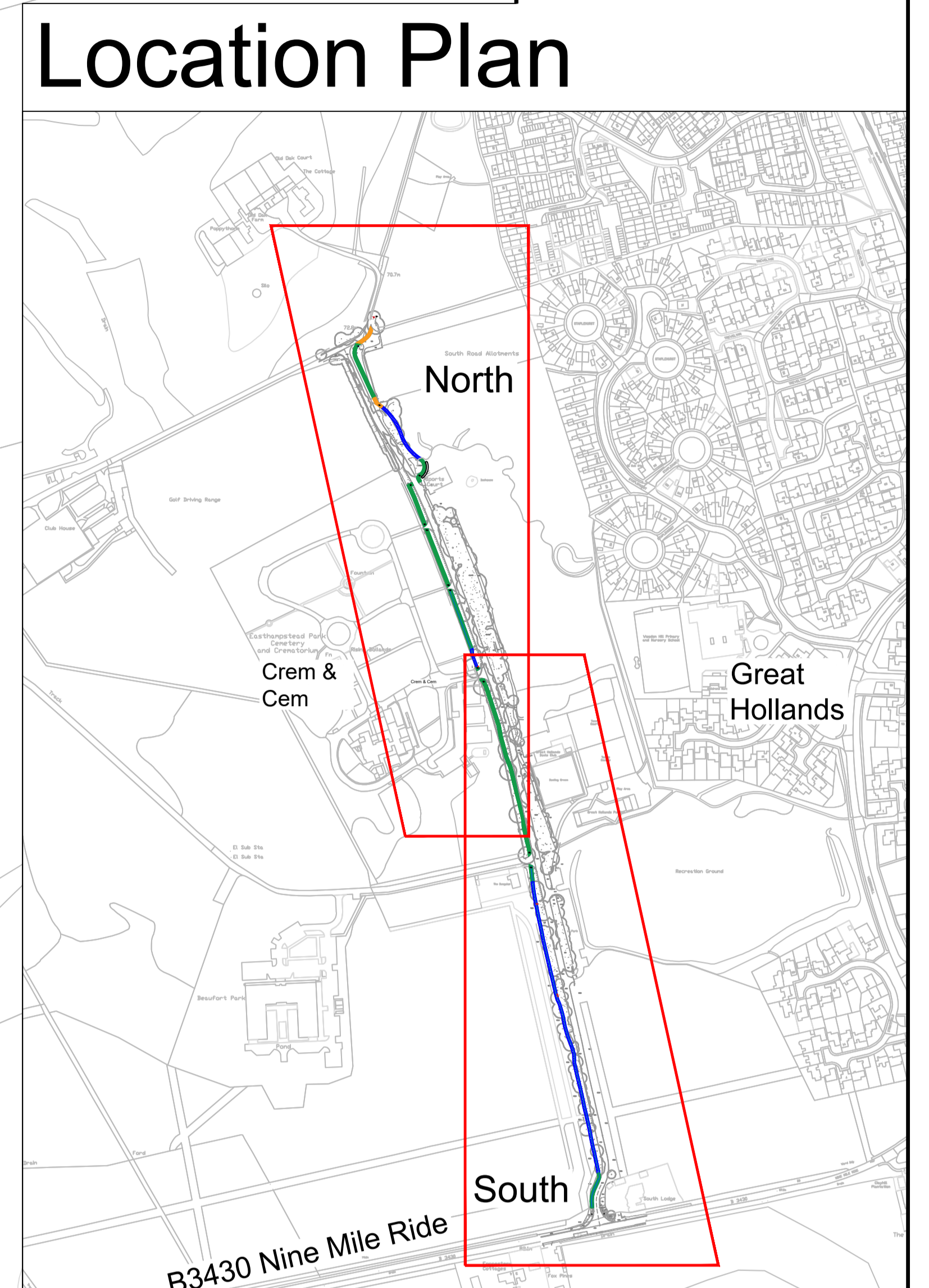


Key:


- New footway construction to SD1100-03C
- New cellular confinement footway construction as per detail
- New vehicle crossover footway construction to SD1100-03C
- Existing tree to be removed
- Tree RPA
- New tactile paving to SD1100-08D
- Cycleway bollard



Notes:

1. Do not scale from drawing
2. Utility covers to be adjusted to new footway level
3. Refer to Exolum guidance on required construction measures
4. Setting out to be carried out by BFC engineer(s)
5. Footway construction to have a gradient no larger than 1:40

Amendment	Date	Initials
E	Route extended	Nov 21 AS
D	Tree removal amended	Nov 21 AS
C	Path construction added	Sep 21 AS
B	Route changed	Sep 21 AS
A	Crossing point moved	Aug 21 AS



Bracknell Forest Council

PLACE, PLANNING & REGENERATION
Transport Engineering Group

Project title
South Road Cycleway

Drawing title
General Arrangement

Prepared by: GW Checked by: AS

Scale: 1:500 @ A0 Date: October 2021

Project Number: 5291 Drawing Number: 001 Revised Letter: E